



PROFILE

DRDGOLD Limited (DRDGOLD) is a mid-tier, unhedged, surface gold tailings retreatment group headquartered in Johannesburg, South Africa. The group operates mainly in the central Witwatersrand Basin, Gauteng province, where mining began in the 1880s and has continued for more than 100 years.

DRDGOLD is 90% held by public shareholders and 10% by black economic empowerment (BEE) partners. Khumo Gold SPV Proprietary Limited holds 8% while the remaining 2% is held by historically disadvantaged employees through the DRDSA Empowerment Trust.

STRATEGY

The success of our long-term goal to extract as much gold as possible from our assets depends, to a large extent, on how effectively we continue to manage our resources.







Our strategic thinking is directed by sustainable development with a view to utilising an entire resource optimally over the long term by managing the capitals essential to our operation: financial, human, manufactured, natural, and social and relationship.



PEOPLE. PLANET. PROFIT.

GROUP STRUCTURE



FOCUS AREA	INTENTION	PERFORMANCE INDICATORS
 SUSTAINABLE DEVELOPMENT Optimally exploit large surface gold resource	Sustainably retreat our large surface gold resource	Total value distributed Share price in comparison with gold index
 FINANCIAL CAPITAL Control costs and maximise margins to enable our business to generate cash	Ensure full value is realised from product, maintain consistent volumes, manage costs to enable positive cash generation	All-in-sustaining costs (AISC) margin Free cash flow generated
 MANUFACTURED CAPITAL Embrace and develop technology through innovation	Improve gold recovery, operational efficiencies through continued R&D in use of new technologies, encourage a culture of innovation	Recovered gold
 NATURAL CAPITAL Take care of our environment	Reduce impact on natural and environmental resources	Potable water usage Dust exceedances from tailings
 HUMAN CAPITAL Take care of our people	Ensure safety and wellbeing of employees, learning and skills transfer	Safety – fatalities, lost time injury frequency rate (LTIFR), reportable injury frequency rate (RIFR) Value distributed to employees
 SOCIAL CAPITAL Support neighbouring communities	Develop business and social partnerships based on mutual value creation	Socio-economic development spend

ABOUT ERGO

Ergo is our single operating entity, based in Brakpan, Ekurhuleni Metropolitan Municipality, Gauteng province, with rights to explore and mine an 11.8Moz surface resource.

The technology used by Ergo fine grinds gold-bearing material to achieve recovery efficiencies previously outside the reach of typical metallurgical processing.

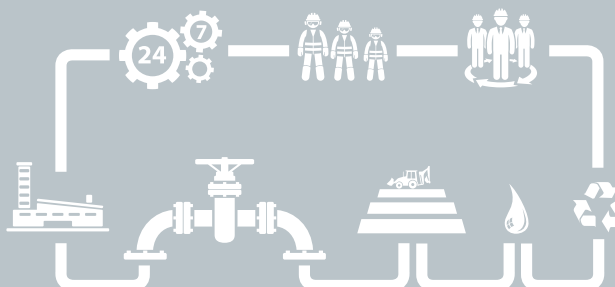
“DRDGOLD is not a typical gold mining company as we focus exclusively on surface retreatment and not on underground mining”

OUR STRATEGIC FOCUS



COMPETITIVE ADVANTAGE PROVIDED BY A COMBINATION OF RESOURCES:

- Plant
- Infrastructure and pipeline network
- Deposition capacity
- Water
- Technology and skills set
- Strong, experienced management team
- Relatively small workforce
- Automated operation 365 days of the year, 24/7
- Advanced technology



ENVIRONMENTAL MANAGEMENT

We include environmental management in project planning as prevention is more effective than mitigation or rehabilitation. Before we embark on any project, we engage with our stakeholders in a public participation process. We are thus able to identify, address and minimise the effects of our activities on the environment.

By necessity, our operations take place in urban areas where people live, work and play. How we conduct our business affects surrounding communities.

When we discuss creating value for our stakeholders, we define this as long-term sustainable value. Building personal relationships with our stakeholders is not just good business sense, it is what we stand for. As our operations are in urban areas, there are various economic, social, regulatory, community and environmental influences we need to navigate to ensure long-term sustainability.

DRDGOLD's Board is committed to representing a fair and transparent review of the group's position to stakeholders. We ensure timeous and efficient handling of our stakeholders' issues as maintaining a good long-term relationship with our stakeholders is a key priority. Our Board carefully ensures that communication on our performance is distributed to all stakeholders and the public through a broad range of channels.



WE SECURE INVESTOR VALUE BY ENGAGING WITH STAKEHOLDERS

Our group and Board

- Adhere to listing requirements and regulations
- Ensure social and labour plans (SLPs) are in place
- Have regular communication with government on mining, water, environmental affairs, education and labour

Communication tools and methods

- Workplace meetings
- Short message service (SMS)
- *Asikhulume*, an internal, half-yearly, printed newsletter given to all employees
- Independent, anonymous tip-off line to report fraud or crime
- Community forums
- Formal workplace briefing procedure

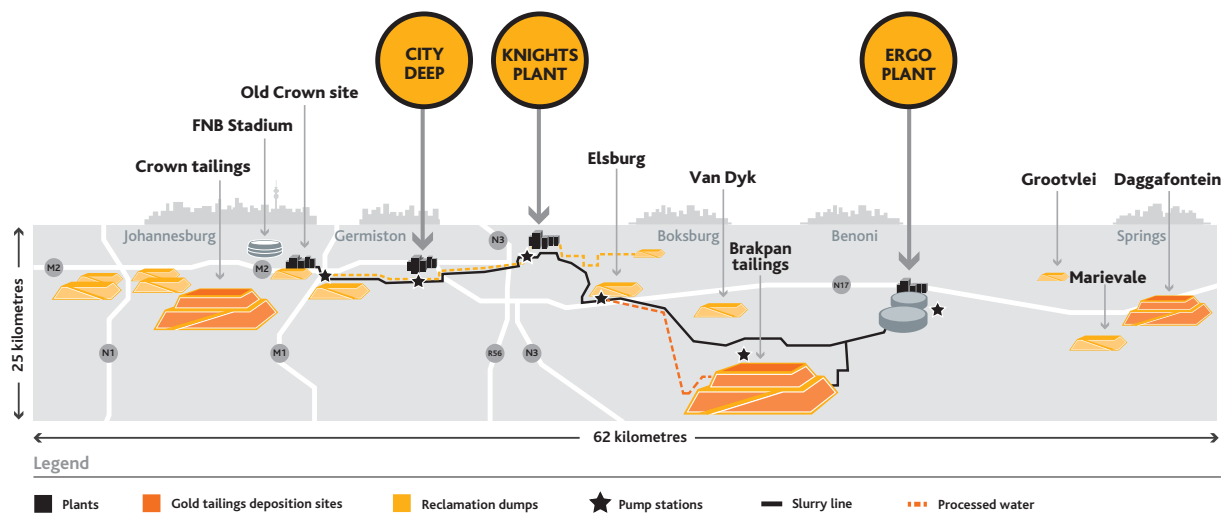
Provision of key information

- In an unbiased, timely manner
- JSE's Stock Exchange News Service (SENS)
- News releases on our website
- Web alerts to analysts, media and investors
- Presentations, briefings and webcast
- Various investor conferences
- Investor roadshows for small groups and one-on-one meetings



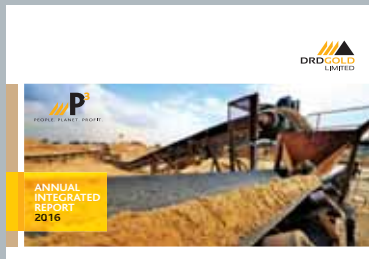
"DRDGOLD's core operations, following the gradual evolution from hybrid slime and hard rock producer to exclusive mechanised surface slime processing, are now made up of the Ergo plant and its surrounding infrastructure and resource"

THE ERGO PIPELINE



FOR MORE INFORMATION

see our annual report and fact sheets at www.drdgold.com



Annual Integrated Report 2016



Acid Mine Drainage Managed



Dust Management



Radiation and Health Risk Management

CONTACT DETAILS

DRDGOLD corporate office

1 Sixty Jan Smuts
2nd Floor, North Tower
160 Jan Smuts Avenue, Rosebank
Johannesburg 2196
Tel: +27 (0)11 470 2600
Fax: +27 (0)86 524 3061

Investor and media relations

South Africa and North America
James Duncan, Russell and Associates
Tel: +27 (0)11 880 3924
Mobile: +27 (0)79 336 4010
E-mail: james@rair.co.za

UK and Europe

Phil Dexter, St James's Corporate Services
Tel: +44 (0)207 796 8644
Mobile: +44 (0)779 863 4398
E-mail: phil.dexter@corpserv.co.uk