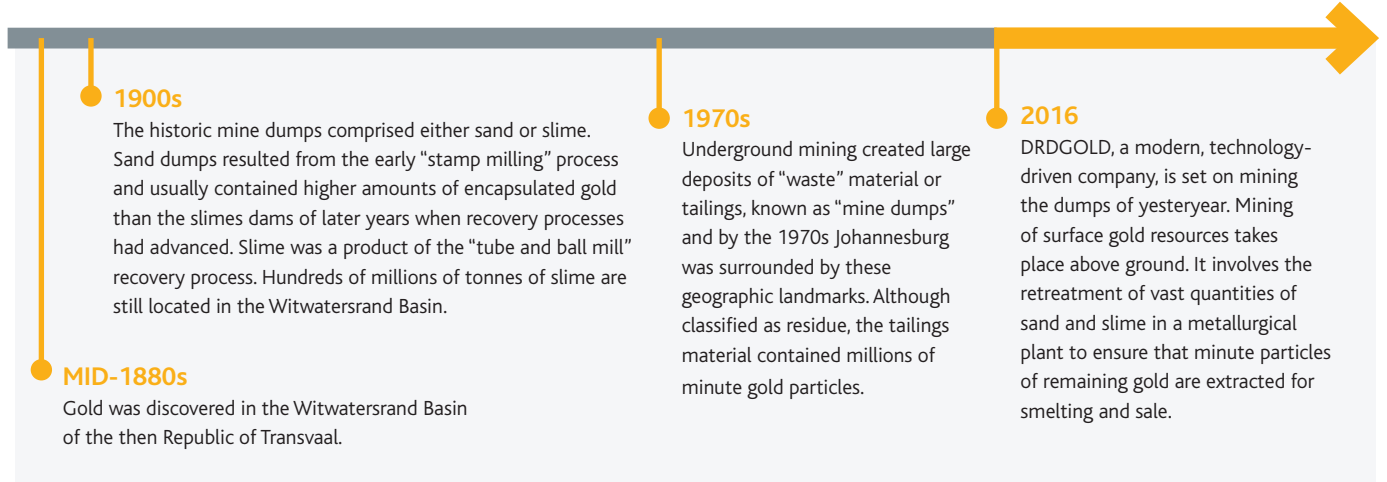


DUST MANAGEMENT FACT SHEET

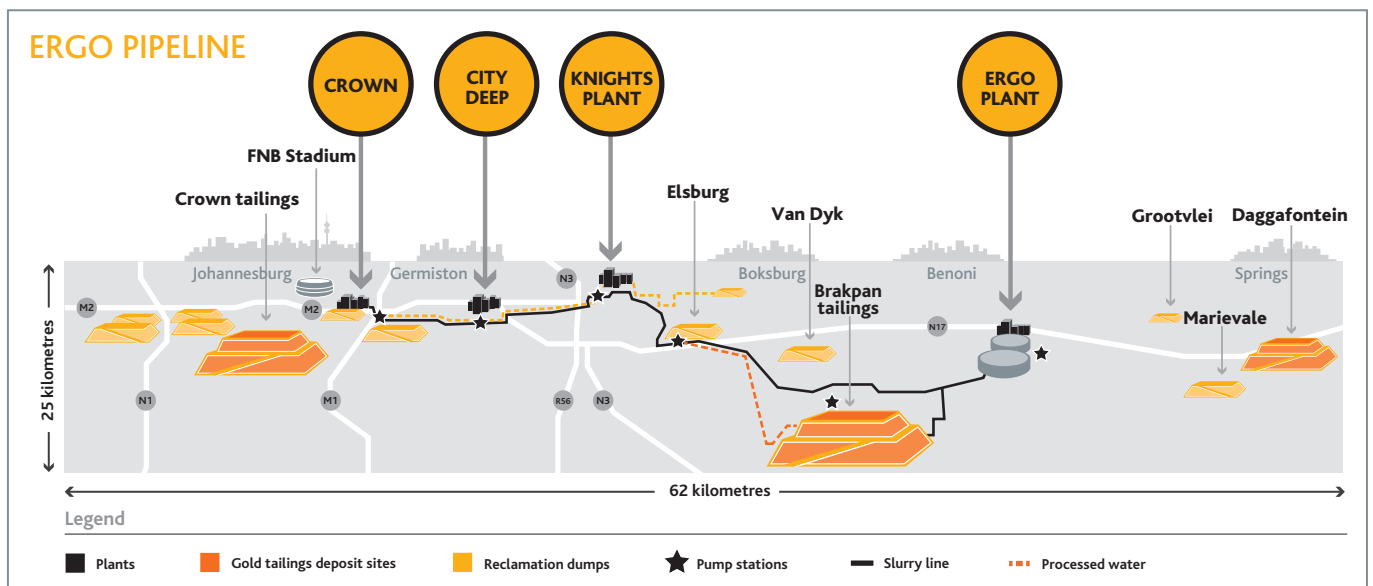


THE NEW FACE OF MINING
A world leader in surface gold tailings retreatment

GOLD IN THE WITWATERSRAND BASIN



DRDGOLD's tailings facilities, managed by a single operating entity, Ergo Mining Proprietary Limited (Ergo), mainly comprise sand, rock, gravel, debris and water (which evaporates slowly). During periods of high wind, dust tends to rise off our sites and is sometimes considered a nuisance by surrounding communities. By law, dustfall should not exceed 600mg/m³ per day in a residential area. The dustfall from our operations seldom exceeds 300mg/m³ per month.



DUST MANAGEMENT FACT SHEET



DUST SUPPRESSION

DRDGOLD has spent more than R252 million on dust control since 2012 for the benefit of households and businesses in the area. Many initiatives have been in place for years and are yielding good results but, until we have removed the dumps we remain committed to suppressing dust.

Dust suppression methods



- **water bowsers** spray binding chemicals on all active haul and access roads



- **slime mining**, which once completed will have removed the potential source of dust permanently.



- **netting** to reduce wind velocity, decrease airborne dust from exposed surfaces and support vegetation growth



- **vegetation** on open surfaces and side slopes of tailings dams



- **cladding** on main access roads



- **mining methods** that reduce dust (such as mining sand dumps into the direction of the prevailing wind to prevent exposure of open faces)



- **ongoing research** into new methods of dust suppression

In 2015, DRDGOLD vegetated a total of 34ha at the Crown complex and is on track to complete the programme in 2022.

LAND CLEARED FOR REDEVELOPMENT

Another key dust contributor is the land DRDGOLD clears for redevelopment – in 2015, the National Nuclear Regulator approved 194ha of rehabilitated land for alternative use. Removal of these sites from the mining area by the Department of Mineral Resources, so that they can be developed, is now in progress.

DUST MONITORING

Windblown dust fall-out is measured and monitored, at our request, by an independent company, SGS South Africa (Proprietary) Limited, which uses the American Society for Testing and Materials (ASTM) standard method for collection and analysis of dustfall (ASTM D 1739). The results are shared quarterly with a dust monitoring forum.

STAKEHOLDER ENGAGEMENT

Dust complaint registers are kept at our operations, and we log and register all complaints that need to be addressed. The results of our dust monitoring programme – are presented at forum meetings.

The forum, established by DRDGOLD in 1980, is chaired by Prof Harold Annegarn, an independent academic, is open to all interested and affected parties: members of the public, non-governmental organisations, government departments, businesses and environmental consultancies.

CONTACT DETAILS

DRDGOLD corporate office
Crown Mines complex
Off Crownwood Road, Crown Mines
Johannesburg, 2092
Tel: +27 (0) 11 470 2600
Fax: +27 (0) 11 470 2618

Investor and media relations
South Africa and North America
James Duncan, Russell and Associates
Tel: +27 (0) 11 880 3924
Mobile: +27 (0) 79 336 4010
james@rair.co.za

UK and Europe
Phil Dexter, St James's Corporate Services
Tel: +44 (0) 207 796 8644
Mobile: +44 (0) 779 863 4398
phil.dexter@corpserv.co.uk